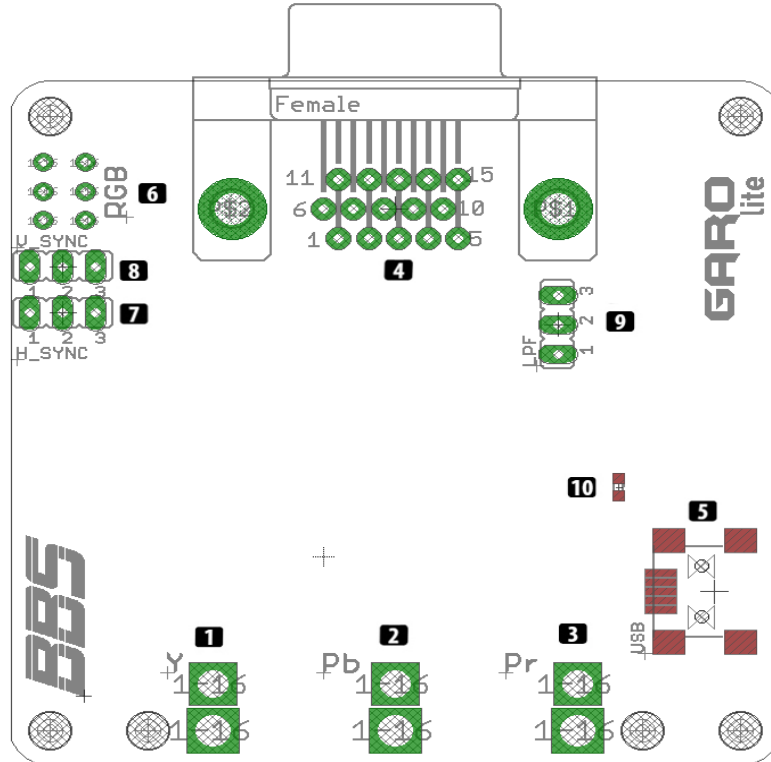


GARO

component video converter

QUICK START GUIDE



1. Component Y input (green) jack
2. Component Pb input (blue) jack
3. Component Pr input (red) jack
4. Female VGA port (HD15) for video output
5. Mini USB for power input
6. RGB output mode switch (bottom position for RGBHV, top for RGBS)
7. HSYNC polarity jumper (1-2 for (-), 2-3 for (+)) **
8. VSYNC polarity jumper (1-2 for (-), 2-3 for (+)) **
9. LPF: internal HD low-pass filters (1-2 off, 2-3 on)
10. Power led

* USB Adapter Specs: 5V,1A

** For some resolutions, jumpers can be changed for proper displaying

